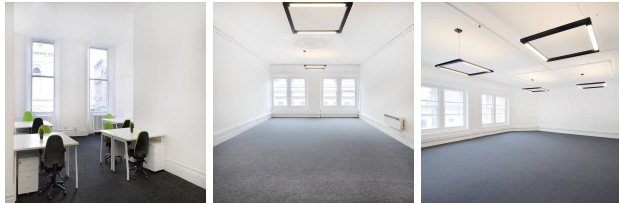


Central Chambers, 93 Hope Street, Glasgow, Scotland

View this office online at:

<https://www.newofficeeurope.com/details/serviced-offices-central-chambers-93-hope-street-glasgow-scotland>



Central Chambers is a stunning period building on the corner of Hope Street, Glasgow and is a highly sought after location. This area is very popular with professional organizations and businesses as it is in the main commercial district. All the offices are fully furnished, spacious and light occupying six floors plus a mezzanine. The offices are accessible 24 hours a day, and there is good security.

Transport links

- Nearest tube: St Enoch
- Nearest railway station: Glasgow Central
- Nearest road: St Enoch
- Nearest airport: St Enoch

Key features

- 24 hour access
- Close to railway station
- Near to subway / underground station
- Period building
- Security system
- Town centre location
- Unbranded offices

Location

A brilliant city centre location which offers easy access to the motorway network via the Clydeside Expressway and the M8. Queen Street and Glasgow Central mainline stations are within a few minutes walk as are several underground stations ensuring rapid transport connections throughout the city. Glasgow International Airport is just over two miles away providing direct connections to the US, Europe and Far East. The St Enoch and Buchanan Galleries shopping centres contain many prestigious retail outlets together with a good range of restaurants and bars.

Points of interest within 1000 metres

- Premier Inn (hotel) - 360m from business centre

- Mackenzie Meanswear (clothes) - 374m from business centre
- Cadogan Square (parking) - 409m from business centre
- Blythswood Square (garden) - 418m from business centre
- Glasgow City Free Curch (place of worship) - 430m from business centre
- St Columba Curch (place of worship) - 537m from business centre
- Stalled Spaces (garden) - 553m from business centre
- Adelaides (guest house) - 561m from business centre
- Strathclyde Police Headquarters (police) - 575m from business centre
- Menzies Hotel (hotel) - 578m from business centre
- Glasgow, Argyle Street/ Oak Street (bus stop) - 582m from business centre
- Glasgow City Centre, St Vincent Street / Holland Street (bus stop) - 583m from business centre
- Marriott (hotel) - 586m from business centre
- Anderston (railway station) - 669m from business centre
- Anderston (railway station) - 677m from business centre
- Centre for Contemporary Arts (arts centre) - 686m from business centre
- CCA (attraction) - 691m from business centre
- Renfield Street, Saint Steven's Church and Centre (place of worship) - 727m from business centre
- Friends Meeting House (place of worship) - 731m from business centre
- Elmbank Crescent Car Park (parking) - 765m from business centre
- Saint Patrick's Primary School (school) - 781m from business centre
- The King's Theatre (theatre) - 785m from business centre
- Royal Bank of Scotland (bank) - 798m from business centre
- Charing Cross (railway station) - 801m from business centre
- Lloyds TSB (bank) - 822m from business centre
- Garnethill School (school) - 934m from business centre
- Mitchell Library (library) - 952m from business centre
- Anderston Kelvingrove Church (place of worship) - 973m from business centre