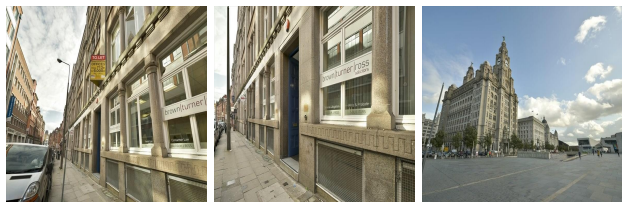


Granite Building, Stanley Street, Liverpool, Merseyside

View this office online at:

<https://www.newofficeeurope.com/details/serviced-offices-granite-building-stanley-street-liverpool-merseyside>



This impressive Grade II Listed building comprises of six floors of recently refurbished office accommodation which revolve around a central service core. A humble 332 sq ft is on offer on the fourth floor while a larger 1,1784 sq ft resides on the lower ground floor. This centre boasts an elegant, manned reception area and communal areas which have undergone extensive refurbishment to provide a productive and pleasant working environment, bathed in light and period charm. With a desirable location and remarkable offices, this is the ideal business centre to house a small to medium-sized company looking for splendid office accommodation with flexible terms.

Transport links

- Nearest railway station: Liverpool Lime Street, Liverpool James Street, Liverpool Central
- Nearest road:
- Nearest airport:

Key features

- 24 hour access
- Car parking spaces
- Close to railway station
- Perimeter trunking installed
- Reception staff
- Suspended Ceilings
- Town centre location

Location

Nestled within Liverpool's commercial district, this centre is in the perfect position, surrounded by other major corporations and a wealth of amenities. There are various shops, pubs, hotels and restaurants in this vicinity alongside four railway stations, with the closest being Moorfields, providing excellent public transport options. For drivers, the property can be accessed via the M62 and car parking spaces are provided. The nearest airport is Liverpool which can be reached in a 25 minute drive.

Points of interest within 1000 metres

- Municipal Buildings (public building) - 146m from business centre
- Moorfields (railway station) - 162m from business centre
- HSBC (bank) - 256m from business centre
- Town Hall (townhall) - 256m from business centre
- Yate's (pub) - 259m from business centre
- Slaters (clothes) - 278m from business centre
- Henry Cotton Campus car park (parking) - 366m from business centre
- Superlambanana (artwork) - 373m from business centre
- The Queen Elizabeth II Law Courts (courthouse) - 380m from business centre
- St John's Gardens (garden) - 433m from business centre
- Travelodge (hotel) - 463m from business centre
- Our Lady & Saint Nicholas (place of worship) - 475m from business centre
- Chavasse Park (park) - 479m from business centre
- World Museum Liverpool (museum) - 488m from business centre
- The Abbey (pub) - 513m from business centre
- Lloyds TSB (bank) - 518m from business centre
- John Lewis (department store) - 522m from business centre
- Hanover Hotel (hotel) - 525m from business centre
- Saint George's Hall (attraction) - 533m from business centre
- O'Neills (pub) - 534m from business centre
- Liverpool Central Library (library) - 540m from business centre
- The Empire (pub) - 540m from business centre
- Pop World (nightclub) - 543m from business centre
- Villa Romana (restaurant) - 550m from business centre
- Bar Ca Va (pub) - 555m from business centre
- Santander (bank) - 561m from business centre
- Hilton Liverpool hotel (hotel) - 566m from business centre
- Cunard Building (attraction) - 573m from business centre
- Royal Liver Building (attraction) - 575m from business centre
- The Crown (pub) - 589m from business centre
- Port of Liverpool Building (attraction) - 590m from business centre
- Crowne Plaza (hotel) - 609m from business centre
- Walker Art Gallery (arts centre) - 611m from business centre
- Liverpool Central (railway station) - 645m from business centre
- Liverpool Empire Theatre (theatre) - 648m from business centre
- Merseyside Police Headquarters (police) - 659m from business centre

- The Vines (pub) - 673m from business centre
- SAS Radisson (hotel) - 678m from business centre
- Malmaison (hotel) - 679m from business centre
- Liverpool Lime Street (railway station) - 682m from business centre
- Pier Head Ferry Terminal (ferry terminal) - 705m from business centre
- Le Bateau (nightclub) - 731m from business centre
- Society (nightclub) - 739m from business centre
- The Adelphi (hotel) - 741m from business centre
- The Old Rope Walk (pub) - 763m from business centre
- Slater's (pub) - 764m from business centre
- The Liner Hotel (hotel) - 783m from business centre
- The Shipping Forecast (pub) - 783m from business centre
- Jacaranda (pub) - 785m from business centre
- Liverpool John Moores University (university) - 798m from business centre
- Revolution (pub) - 830m from business centre
- car park (parking) - 837m from business centre
- Roscoe Gardens (park) - 841m from business centre
- The Monro (pub) - 842m from business centre
- Chaya (pub) - 845m from business centre
- The Liffey (pub) - 852m from business centre
- Mount Pleasant Car Park (parking) - 872m from business centre
- 3345 (restaurant) - 884m from business centre
- Picturehouse at FACT (cinema) - 893m from business centre
- Pleasant Street C.P. J.M.I. School (school) - 957m from business centre

All information contained in this document is for guide purposes only and NewOfficeEurope.com.com cannot be held responsible for any inaccuracies or omissions. Please confirm all details with the agent representing this office space before proceeding. Full terms of service can be viewed at <http://www.NewOfficeEurope.com.com/terms-of-service>.