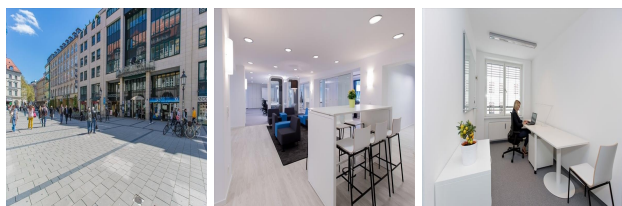


Oberanger 6, Munich, Bayern, Germany

View this office online at:

<https://www.newofficeeurope.com/details/serviced-offices-oberanger-6-munich-bayern>



Designed for artistic and creative companies, this co-working business centre provides immaculately presented office space which is brimming with space and natural light to enhance productivity. This unique facility offers 12 serviced offices and flexible workspaces comprising of 500 square metres which start from €1200 per office with additional workspaces just €249 while the large co-working space is €399 per person, all of which include high quality furniture and the latest technology with tenants enjoying round the clock access to the property. With meeting rooms, a business lounge, event area and bar, there is plenty of beautifully presented space for entertaining commercial alliances in style.

Transport links

- Nearest tube: U-Bahn Marienplatz
- Nearest railway station: S-Bahn Marienplatz
- Nearest road: U-Bahn Marienplatz
- Nearest airport: U-Bahn Marienplatz

Key features

- 24 hour access
- Administrative support
- Car parking spaces
- Central heating
- Comfortable lounge
- Furnished work spaces
- High-speed internet
- IT support available
- Kitchen facilities
- Lift
- Meeting rooms
- Office cleaning service
- Photocopying available
- Reception staff
- Restaurant in the building
- Secure car parking

- Town centre location
- Virtual office available
- WC (separate male & female)
- Wireless networking

Location

Located in the heart of Munich, your company can enjoy a prestigious address in the Bavarian Capital which is enhanced by the iconic sights of the Marian Column. A diverse range of amenities lie within walking distance including cafés, boutiques and restaurants alongside a number of landmark attractions, all of which boast a spectacular combination of contemporary and traditional architecture. Marienplatz is very well-connected with the nearest underground station just a 2 minute stroll away while Munich International Airport can be reached within a half an hour drive via the A9.

Points of interest within 1000 metres

- Hauptsynagoge Ohel Jakob (place of worship) - 108m from business centre
- Judisches Museum (museum) - 129m from business centre
- City Parkhaus (parking) - 192m from business centre
- Altes Rathaus (attraction) - 373m from business centre
- Blumenschule (school) - 407m from business centre
- Justizgebäude Pacellistrasse (courthouse) - 623m from business centre
- Hofbräuhaus am Platzl (restaurant) - 624m from business centre
- Pfarrkirche St. Matthäus (place of worship) - 626m from business centre
- Maximilian I. Joseph König von Bayern (memorial) - 636m from business centre
- Operngarage (parking) - 650m from business centre
- Isartor (sally port) - 688m from business centre
- Königsbauhof (attraction) - 711m from business centre
- Hotel Königshof (hotel) - 747m from business centre
- Kapellenhof (attraction) - 758m from business centre
- Feldherrnhalle (attraction) - 775m from business centre
- Theatinerkirche (place of worship) - 790m from business centre
- Chirurgische Klinik der Universität München (hospital) - 812m from business centre
- Platz der Opfer des Nationalsozialismus (park) - 819m from business centre
- Neptunbrunnen (fountain) - 840m from business centre
- Bayerisches Staatsschauspiel - Marstall (theatre) - 855m from business centre
- Gebäude K (university) - 862m from business centre
- Oberlandesgericht München und Bayerischer Verfassungsgerichtshof (courthouse) - 919m from business centre

centre

- Karstadt Bahnhofplatz (department store) - 933m from business centre
- Poliklinik f. Dermatologie, Allergologie (hospital) - 950m from business centre
- Parkcafe (restaurant) - 959m from business centre
- St. Maximilian (place of worship) - 973m from business centre
- Museum Funf Kontinente (museum) - 996m from business centre

All information contained in this document is for guide purposes only and NewOfficeEurope.com.com cannot be held responsible for any inaccuracies or omissions. Please confirm all details with the agent representing this office space before proceeding. Full terms of service can be viewed at <http://www.NewOfficeEurope.com.com/terms-of-service>.