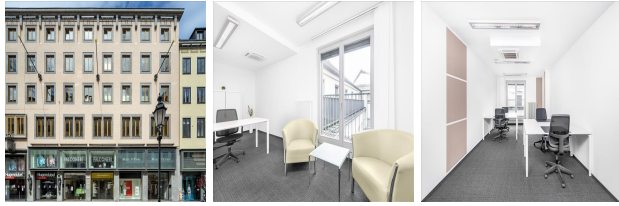


Theatinerstrasse 11, Munich, Bavaria

View this office online at:

<https://www.newofficeeurope.com/details/serviced-offices-theatinerstrasse-11-munich-bavaria>



Designed to help your firm flourish, this practical and modern office centre provides premium work space with flexible terms that guarantee the offices work in harmony with your business. All residents can push productivity to its limits thanks to the 'always open' policy, making sure that a functional office space is maintained every day of the week. This centre is also able to offer the use of parallel hubs all over the world that have a shared access arrangement - this makes it a great prospect for multinational enterprises who could benefit from an office provision whilst they are overseas. Additional features and facilities include full administrative support, meeting rooms and a board room, making this an exceptionally adept centre for all types of business.

Transport links

- Nearest tube: Odeonsplatz
- Nearest airport: Odeonsplatz

Key features

- 24 hour access
- Access to multiple centres nation-wide
- Access to multiple centres world-wide
- Administrative support
- Air conditioning
- Board room
- Central heating
- Close to railway station
- Comfortable lounge
- Disabled facilities (DDA/ADA compliant)
- Double glazing
- Double glazing
- Flexible contracts
- Flexible contracts
- Furnished workspaces
- High-speed internet
- Hot desking
- Kitchen facilities

- Meeting rooms
- Modern interiors
- Near to a subway/underground station
- Office cleaning service
- Open plan workstations
- Reception staff
- Town centre location
- WC (separate male & female)
- Wifi
- Wireless networking

Location

Nestled in the heart of Munich's old town, these offices reside within a flourishing downtown district that is brimming with historical charm yet 21st century facilities. A fantastic aspect of being based in this district of Munich is its the provision of entertainment and leisure venues. Only 250m from the door is Bayerisches Nationaltheater, offering an attractive proposition for relaxing with clients or staff, and can be reached on foot in about 5 minutes. This business hub offers loads of restaurants, a good example of which would be Hofbräuhaus, little more than a 9 minute walk away and something of a favorite with all that visit. There are also a wide range of residential apartments and five courtyards surrounding the building with only a 4 minute stroll to Munich's central square. Munich International Airport is roughly 35 km away and can be reached via the A9 in 44 minutes. Due to its highly sought after position, this office space provider would be a popular option for companies based in Munich, and would be well worth a visit when weighing up which would be the best new office space for your company.

Points of interest within 1000 metres

- Operngarage (parking) - 133m from business centre
- Königsbauhof (attraction) - 161m from business centre
- Maximilian I. Joseph König von Bayern (memorial) - 164m from business centre
- Feldherrnhalle (attraction) - 174m from business centre
- Kapellenhof (attraction) - 184m from business centre
- Theatinerkirche (place of worship) - 191m from business centre
- National Theatre Munich (theatre) - 249m from business centre
- Apothekenhof (attraction) - 283m from business centre
- Platz der Opfer des Nationalsozialismus (park) - 305m from business centre
- Altes Rathaus (attraction) - 407m from business centre
- Bayerisches Staatsschauspiel - Marstall (theatre) - 416m from business centre
- Hofbräuhaus am Platzl (restaurant) - 444m from business centre
- City Parkhaus (parking) - 470m from business centre
- Justizgebäude Lenbachplatz 7 (courthouse) - 523m from business centre
- Von-der-Tann-Strasse (bus stop) - 529m from business centre
- Dichtergarten (park) - 592m from business centre

- Gebäude K (university) - 613m from business centre
- St. Markus (place of worship) - 650m from business centre
- Prinz-Carl-Palais (public building) - 670m from business centre
- Ohel Jakob synagogue (place of worship) - 699m from business centre
- Jewish Museum Munich (museum) - 727m from business centre
- Sankt-Anna-Klosterkirche (place of worship) - 728m from business centre
- Regierung von Oberbayern (public building) - 782m from business centre
- Museum Funf Kontinente (museum) - 783m from business centre
- Neptunbrunnen (fountain) - 806m from business centre
- Pinakothek der Moderne (museum) - 808m from business centre
- Hotel Opera (hotel) - 838m from business centre
- Museum Brandhorst (museum) - 844m from business centre
- Hotel Konigshof (hotel) - 850m from business centre
- Park Cafe (restaurant) - 873m from business centre
- Hochschule fur Musik und Theater (university) - 893m from business centre
- Department fur Geo- und Umweltwissenschaften (university) - 918m from business centre
- Blumenschule (school) - 974m from business centre
- Alte Pinakothek (museum) - 985m from business centre

All information contained in this document is for guide purposes only and NewOfficeEurope.com.com cannot be held responsible for any inaccuracies or omissions. Please confirm all details with the agent representing this office space before proceeding. Full terms of service can be viewed at <http://www.NewOfficeEurope.com.com/terms-of-service>.